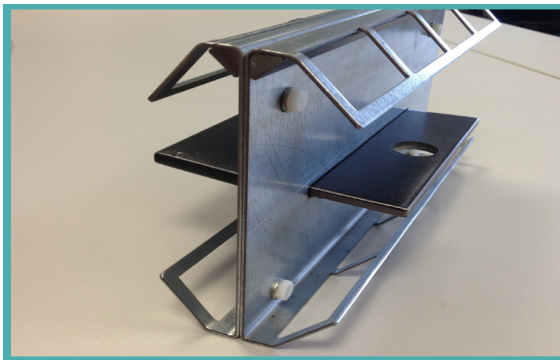


Permaban Eclipse installation guide

Installation Guide Issue 1.1
13/08/2013

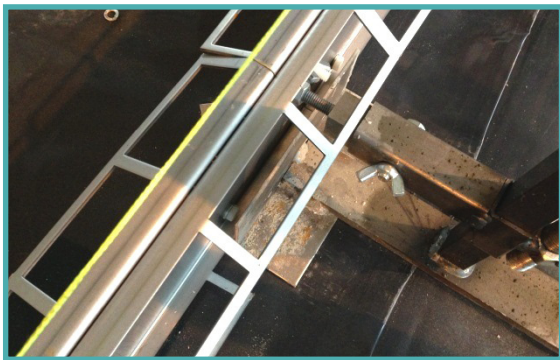
alphafix method



01 Place the joint

Place first length of Permaban Eclipse joint on the ground in an upright position with the triangular section positioned at the top of the joint.

On the bottom of Eclipse, the “grid cut” stops before each end to simplify the use of AlphaFix



02 Assemble AlphaFix to the joint

AlphaFix is used where two joint lengths join together end to end.

Ensure AlphaFix kick plate is against the base of the joint by adjusting the wing nut and lock nut as required.



03 Brace the joint

Use 2 x AlphaFix per length of each joint length, one at each end.

Where additional bracing is required between AlphaFix, additional AlphaFix can be used to support the joint. Alternatively roadform pins and wedges can be used (as shown).

It's important that the joint is braced adequately during concrete works

Permaban Eclipse installation guide

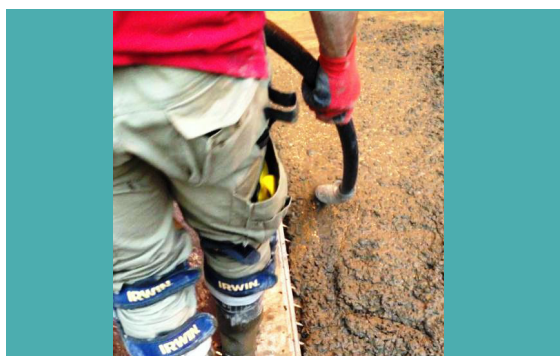
Installation Guide Issue 1.1
13/08/2013



04 Level & adjust the joint

Ensure Eclipse joint is straight and follows the stringline, using AlphaFix and pins

Check the height and that the joint is level, using a spirit level. Adjust as necessary.



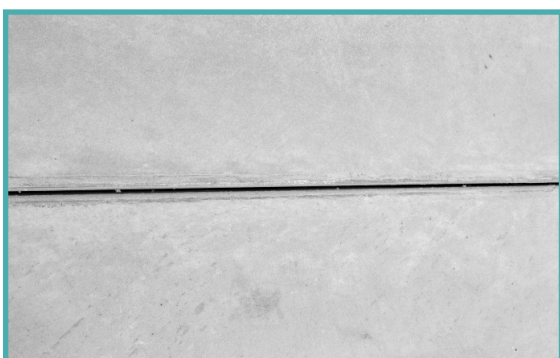
05 Poker vibrating

Poker vibrate along Eclipse. Remove concrete excess from the top of Eclipse as necessary.



06 Re-check joint height

After the use of the poker vibrator, check the installed height of the joint once again. The joint may lift within the concrete when compacted following the use of the poker vibrator.



07 Remove concrete excess

It's important that any concrete excess is removed from the top of the joint during finishing operations, so that the top of the joint is visible when concrete works are complete.